



STURDY-LITE

A DIVISION OF ROADMASTER ENTERPRISES, LLC

1900 INDUSTRIAL BLVD | BRISTOL, TENNESSEE 37620

OFFICE: 423-968-7021 | FAX: 423-968-3820

MOUNTING KIT INSTALLATION INSTRUCTIONS FOR STURDY-LITE CAB RACKS AND VAULTS



END-USER SAFETY NOTE:

READ THESE INSTRUCTIONS COMPLETELY AND CAREFULLY BEFORE INSTALLING AND USING STURDY-LITE CAB RACKS AND/OR VAULTS. FAILURE TO DO SO MAY RESULT IN DAMAGE TO STURDY-LITE CAB RACKS AND/OR VAULTS, SEMI-TRUCK COMPONENTS, OR OTHER EQUIPMENT WHICH AFORESTATED PRODUCTS ARE IN CONTACT WITH. STURDY-LITE DOES NOT ASSUME ANY RESPONSIBILITY FOR PERSONAL INJURY OR PROPERTY DAMAGE CAUSED BY INCORRECT INSTALLATION AND/OR USE OF AFORESTATED CAB RACKS AND/OR VAULTS.

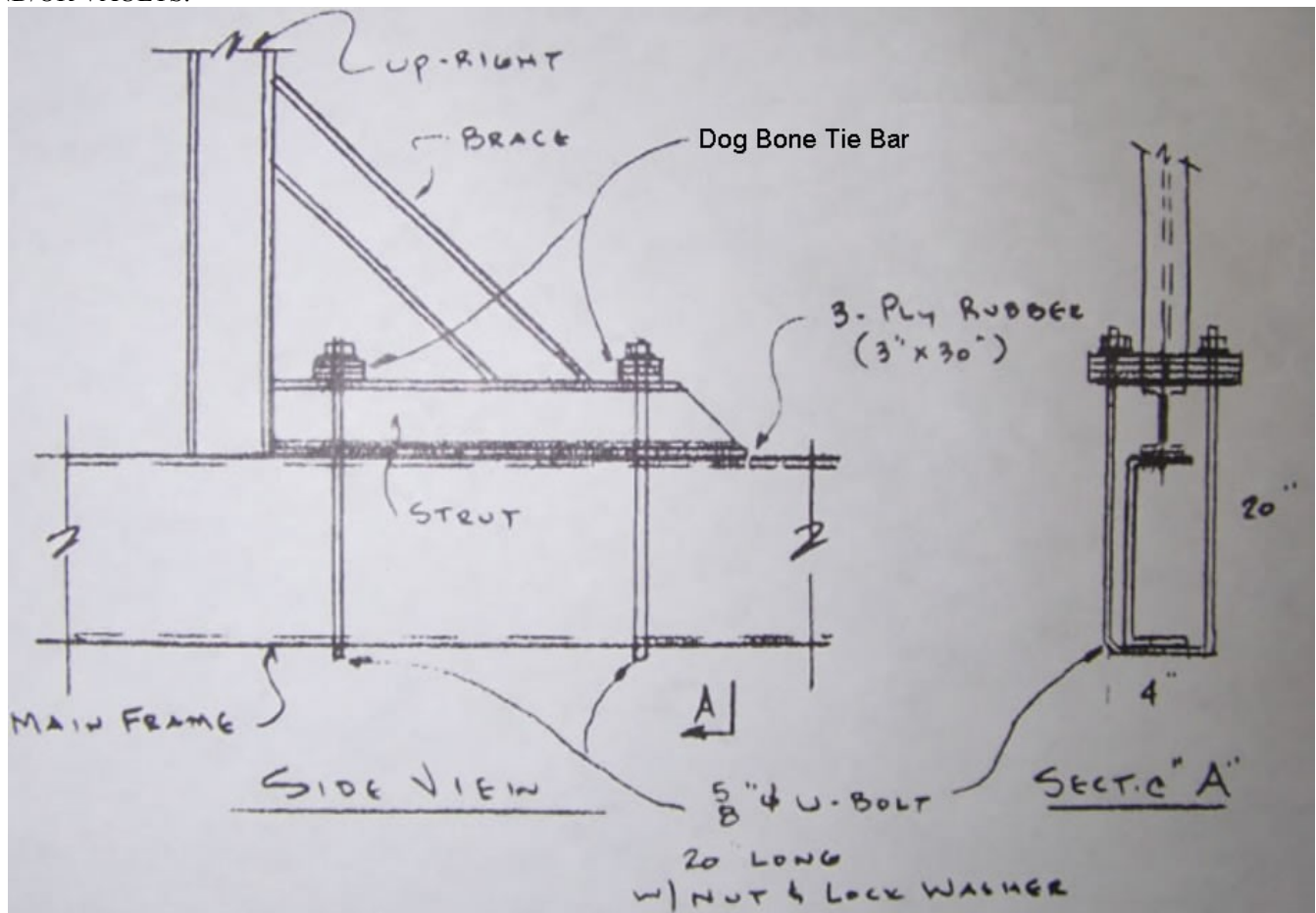


Figure 1 – Basic schematic of isolated view of Cab Rack/Vault lower leg subassembly

NOTES:

- TORQUE THE 5/8”-DIA U-BOLTS TO COUPLED STEEL PLATES W/ NUT & LOCK WASHER TO A MEASURED TORQUE VALUE OF 80 LB/FT MINIMUM, 90 LB/FT MAXIMUM USING TORQUE WRENCH**
- THIS PRODUCT MUST BE INSTALLED AND MAINTAINED AT SPECIFIED TORQUE.**

INSTALLATION INSTRUCTIONS:

- Step 1) Position Cab Rack's or Vault's vertical beams such that the rear vertical face of the I-beam legs are approximately two inches (2”) horizontally from the back of the cab
- Step 2) Place supplied rubber strips between the top horizontal face of the main frame and the bottom horizontal face of the Cab Rack or Vault
- Step 3) Place Cab Rack or Vault on frame – square
- Step 4) Place U-Bolts per Figure 1 above, 'U' up or down. Install tie bar per Fig. 1**
- Step 5) Torque to 80 lb/ft minimum, 90 lb/ft maximum

MAINTENANCE AND INSPECTION NOTES:

- Care and Maintenance – Keep unit clean. Visual inspections recommended monthly per D.O.T. In the event of structural damage, replace immediately!
- WARNING: Maintain specified torque.